

PRECISION SPINE SOLO SLIMPLICITY® ANTERIOR CERVICAL PLATING SYSTEM

NARROW MIDLINE APPROACH

The Slimplicity® SOLO Anterior Cervical Plate System is designed to enhance a narrow midline approach to ACDF procedures. A midline approach allows for more centered screw placement, while minimizing lateral retraction of soft tissue structures and optimizing postoperative visualization of the fusion site. The Slimplicity SOLO Anterior Cervical Plate offers one of the slimmest profiles available, while providing a one step, secure locking mechanism. Variable and fixed screw options accommodate semi-constrained, constrained and hybrid philosophies.



ONE STEP LOCKING



ULTRA-SLIM PROFILE



ADDED STABILITY



PRECISION SPINE®

Discover the Difference



SLIMPLICITY® SOLO ANTERIOR CERVICAL PLATING SYSTEM



Ultra-Slim Profile

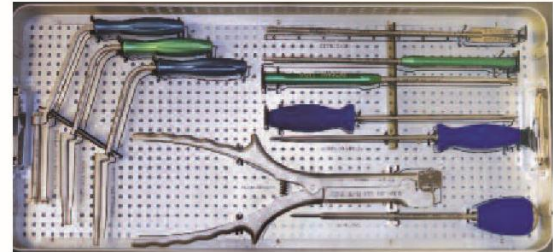
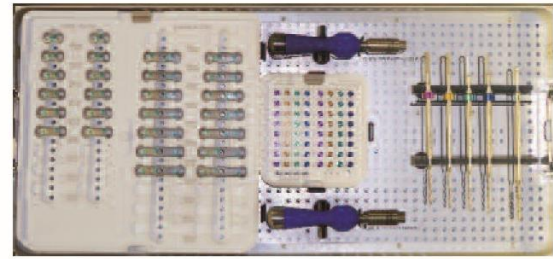
allows for more centered screw placement and minimizes lateral soft tissue retraction

Pre-Contoured

to address patient anatomy

One Step Locking

facilitates secure application



Single Tray Layout minimizes case complexity

SLIMPLICITY® SOLO IMPLANT SIZING



Plate Sizing

Lengths*

1 Level – 9 sizes, 12-28mm (2mm increments)

2 Level – 11 sizes, 26-46mm (2mm increments)

*measured end to end

Thickness 2.2mm Hex size 2.5mm

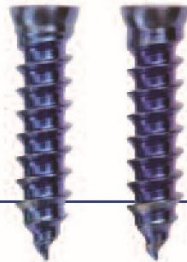
Width 10.5mm Waist 8mm

Self-Drilling and Self-Tapping Fixed & Variable Screw Sizes

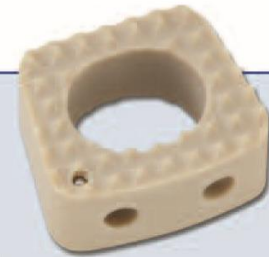
4.5 & 5.0mm Diameters

12-18mm Lengths

(2mm increments)



PRECISION SPINE
SHURFIT™
CERVICAL INTERBODY CAGES



- **Large Contact Area**
is designed to optimize vertebral body support and minimize risk of subsidence
- **Large Graft Area**
enables excellent biological coverage
- **Trapezoidal Design**
allows for proper anterior placement
- **Tantalum Markers**
are strategically placed to aid interbody positioning

SIZING

- 14mm Wide x 12mm Deep
- 16mm Wide x 14mm Deep
- Heights – 5-12mm (1mm increments)
- 5° & 10° Lordotic Options

Precision Spine, Inc.

2050 Executive Drive, Pearl, MS 39208

Customer Service: 1.888.241.4773

Phone: 601.420.4244

Toll Free: 877.780.4370

Fax: 601.420.5501

www.precisionspineinc.com

