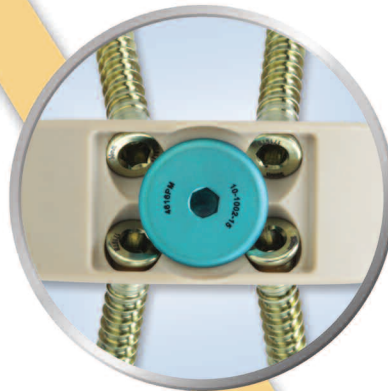
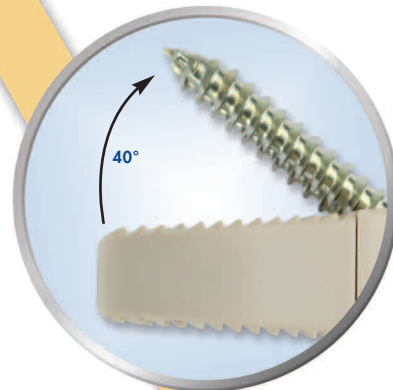


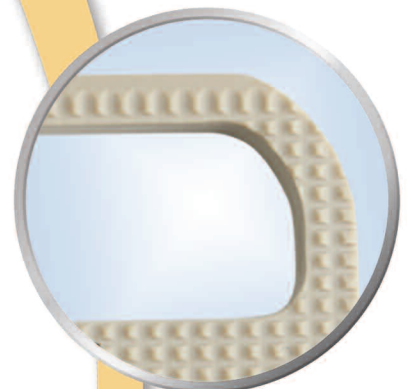
Midline Screw Placement



40° Screw Angle

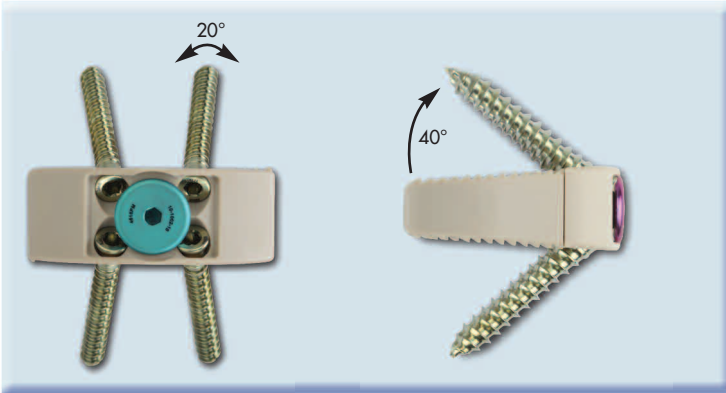


Large Bone Graft Window



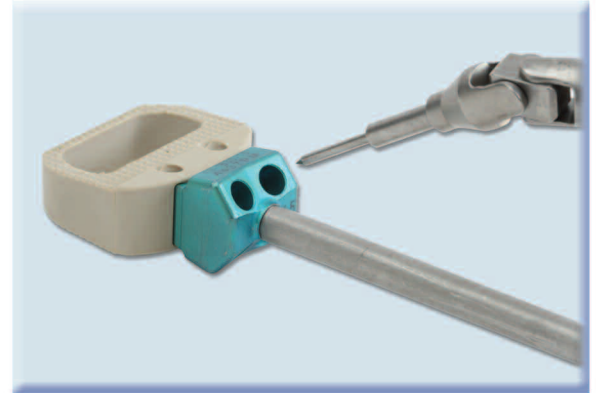
Superior Engineering Design

Vault™ is a zero profile, ALIF system offering midline screw placement to enable easier access, reduced retraction of the neural elements and precise screw placement. The modular plate and cage construct offers two footprints with 8° and 15° lordotic angles to assist in reproducing the patient's sagittal profile while providing anterior column support. The system features four points of divergent, lag screw fixation to allow for compression of the interbody along with a large bone graft window to promote fusion.



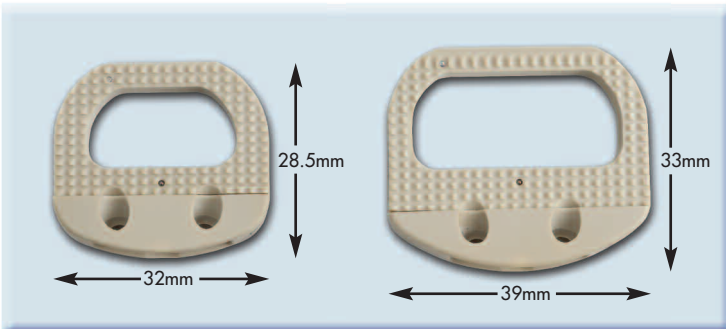
Midline Screw Placement with $\pm 10^\circ$ angulation, aids optimal access and solid fixation

40° Screw Angle resists expulsion forces

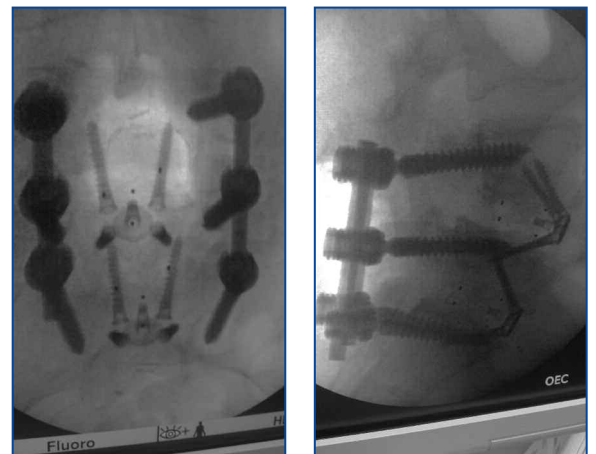


Install Guide Block facilitates easier vertebral body access for simple, precise screw placement

Single Step Locking Cap reduces the risk of screw back-out



Large Bone Graft Window features a significant cross-sectional area for placement of bone graft material



Vault™ System with adjunctive SureLOK™ Pedicle Screw System



8° and 15° Lordotic Options address anatomical requirements

VAULT IMPLANT SIZING

Plate and Cage – 32 x 28.5mm & 39 x 33mm

Heights – 11, 13, 15, 17, 19mm

Lordotic Angles – 8° and 15°

Screw Sizes – 25, 30 and 35mm

Precision Spine, Inc.

2050 Executive Drive, Pearl, MS 39208

Customer Service: 1-888.241.4773 • Fax: 601.420.5501

www.precisionspineinc.com

Please refer to package insert (LBL-IFU-007) for complete system description, indications and warnings.

Caution: Federal (USA) law restricts these devices to sale by or on the order of a physician.

Precision Spine, SureLOK and Vault are trademarks of Precision Spine, Inc.

4069 Copyright ©2015 Precision Spine, Inc. All rights reserved.

